

Renowned technologies

MDA

The StabilisOne system was designed using MDA technology.

The Model Driven Architecture technology is based on the use of 3 stages of creating software:

CIM – Computation Independent Model is a business analysis that aims to determine what future users will do,

PIM – Platform Independent Model, it is about creating a system logic model regardless of its coding technology,

PSM – Platform Spec Model, that is, the implementation of the project with programming techniques and the implementation of appropriate technical infrastructure.

This technology is developed by OMG (Object Management Group), – a consortium, which includes IBM, Apple Computer and Sun Microsystems. The aim of the consortium is to establish and update cross-platform standards, distributed object-oriented programming.

OSGi

OSGi technology is a strictly defined system of rules for creating blocks of JAVA code and the discipline of their cooperation within a single “data bus”. OSGi was established and supported by the most-important participants of the IT services market, such as: IBM, Apple, ORACLE Microsoft, etc.

Consistent implementation of Open Services Gateway initiative standards is the main difference between the integrated StabilisOne platform and the so-called “Applications from the box”. iDempiere, and thus also StabilisOne, has been using OSGi in its architecture from the very beginning, relying on components fully compliant with its principles.

To sum up – StabilisOne, thanks to compliance with OSGi standards, allows unlimited expansion of functionality using plugins without the risk of conflicts within the application.



COBIT MRPII CPPA IWMS RAM GAAP VMI WBS
 PERT MSR TOC MES ERP WMS SSL
 CMMSS CRM SCM MRP RFM ATS
 MRP AC/DC

Open to fit your business

www.stabilis.one



STABILISONE

ul. Ignacego Mościckiego 1, lok. c-127, 24-110 Puławy, POLAND

phone: +48 793 544 030, 884 667 200

mail: office@stabilis.one

www.stabilis.one

Our services



Consulting

- IT & Business consulting
- software consulting in the Open Source specialization
- strategic and operational consulting
- creating business models
- process management
- optimization



ERP StabilisOne

- Implementation and maintenance
- Audit, needs analysis, valuation and signing of the contract; configuration design, scheduling; implementation and tests
- Training, production launching, consultations and maintenance



others

- Accounting in the form of full bookkeeping services on instances of StabilisOne in the SaaS model
- partner startOn erp Accounting (www.starton.com.pl)
- Private cloud, creating websites, hosting and back up data

ergonomy mobile internet optimization innovation planning
 quality Integrate orderliness integration mobility optimal functionality
 functionalities flexibility flows order patterns
 proactivity scalability personalization platform workflow activity
 complexity

Globally recognized and appreciated platform



“Although there were no major updates to the iDempiere Business Suite this year, it remains our top choice for open source ERP. iDempiere is especially well-suited for larger manufacturing and distribution companies.”

powered by:



James R. Borck

Areas of application

(Selected functionalities)

MULTIFACETED INTEGRATION

Proactively focus on what's important. Eliminate barriers and redundancy. Integrate all critical business functions.

Manage your business comprehensively to the full extent by planning production based on the availability of production and human resources, taking into account their limitations, based on current inventory levels, planned future deliveries, contracts and orders as well as future sales plans.

Optimize the work of the warehouse by defining the flow of goods adapted to any infrastructure, enter the order and order in a warehouse, implement fully adjusted quality control.

Expand planning and procurement departments by effectively planning the entire supply chain, automatically generate purchase recommendations and production orders.

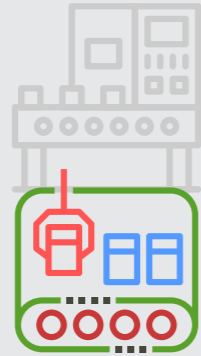
Minimize the effects of downtime, increase the efficiency of TPM services, include TPM in the implementation of production plans.

The use of the MRPII standard gives permanent control over the course of the production process and the associated presentation on a current basis of its advancement in the production of ordered products.

STABILISONE

Production management MRP, MRPII, BOM

- Creating structures in an enterprise
- ATO and ATS picking
- List of BOM materials
- Management:**
 - technology (recipes and routes)
 - production resources
 - production orders
 - shortages and waste
- Service contract production
- Scheduling (MPS, MRP)
- Capacity planning (CRP)



production link

Supplies management SCM, WMS, VMI

- Support for logistic rules
- Ability to implement cross-docking
- Receipt and release of products
- Preview for inventory
- Automatic data capture
- Support for the VMI process
- Batch and serial number monitoring
- Warehouse management:**
 - Support for many warehouses
 - Standard WMS
 - Product location support
 - Automated Stock Replenishment



supplies link

Purchase management ATP, SCM

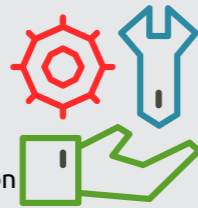
- Automatic purchase recommendations
- Support for purchase requisitions
- Purchase order management
- Ability to aggregate purchases
- Price policy support
- Discount processors
- Shopping costs
- Handling orders "on time"
- Full mapping of codes and names



purchase link

CMMS maintenance support

- Monitoring of work parameters
- Stocks of spare parts
- Groups and repair equipment
- Synchronization of repairs with production
- Technical documentation management



maintenance link

Human resource Management

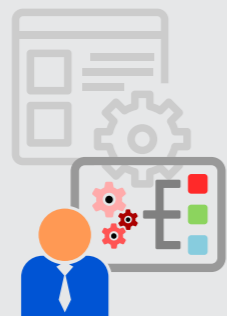
- **Personnel:**
 - records, reporting
- **Salaries:**
 - files, declarations, funds
- **Employee portal:**
 - data, training, holidays



hrm link

Project management

- Planning - phases, stages, tasks
- Cost planning
- Resource management
- Registration of the use of resources
- Automatic settlement of stages
- Monitoring of the financial result
- Planning and allocation of tasks
- Project inventory management



pm link

Security and control

- Call encryption and password
- Defined access modes
- The privilege of the "super-user"
- Login monitoring
- Archiving of event history



security link

Finance and accounting IAS, GAAP

Standard functionalities:

- account plans,
- main logs,
- general ledger,
- VAT, etc.
- Support for several standards
- Support for accounting dimensions
- Inter-company settlements
- Cash management
- Import of courses from banks
- Bank transactions and allocations
- Receivables and liabilities
- Automation of postings



accounting link

Sales management of CRM, RFM

- Contracts and orders
- Support for bulk orders
- Product reservations
- Prices and discount processors
- Substitutes and translations of names
- Automatic invoicing



sales link

Marketing and relationship management:

- Campaigns and projects
- Accounts and contacts
- Financial information about the contractor
- Collection tools
- Analysis of campaign and project results